

Sylvia's Light



February

LEAP YEAR

WINNER'S CHOICE




Choose 1 of 3

Purchase your tickets today!


1 Best Chance Charter

4 people | Starts at 6 AM
All Day (7 hours) or until Catch Limit


Saugatuck on Lake Michigan

2 Boyne Mountain Resort

\$1,000 gift card


Indoor Waterpark
SkyBridge Michigan

3 Wolf Farm's Windy Ridge

Quarter Beef

Spring Butcher
*INCLUDES PROCESSING

520 16TH AVE, BYRON CENTER, MI 49315



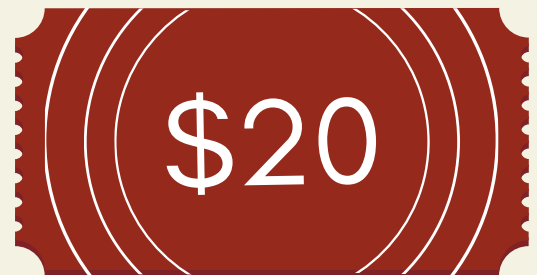
Visit our website



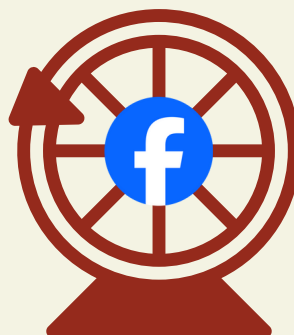
Call our office



Scan QR Code



Drawing takes place on
Feb. 29th



Join us on
Facebook Live
to watch



Project Night Night



Ride or Dye Salon

Our Donation Center



Supportive Services
for
Survivors of
Domestic Violence

24/7 Hotline:
(269) 673-8700

Office:
(269) 673-5742

www.sylviasplace.com



Black History Month



It is an avoidable fact that Sylvia Allen was a young black woman. Furthermore, we can understand how her struggles against a historically racist structures butted against her indomitable will.

We still see this disparity in modern times, and we need to acknowledge that fact.

Black men are 2.5x more likely to be killed by police than white men

Black women 1.4x more likely to be killed than their white counterparts.

Black women are more 80% more likely to be convicted for killing their abusive partner



Help is not out of reach, though. We can help by supporting black survivors of domestic violence as well as platforming their voices!

Want to learn more about Black trailblazing advocates for survivors? Check out the podcast *Let's End DV: Heal, Restore, Prevent*





Fashion show 2024



Fashion, Fun, and Refreshments: In Review



On January 25th, the Rabbit Boutiques hosted their 2024 Fashion Show. 100% of the proceeds went to Sylvia's Place.

\$300 raised



Thank you!

It was a night of fun and fashion with an array of refreshments. Altogether, their show raised \$300! Thank you so much!



Volunteer Recognition

Thank you Sally for significantly helping in returning pop bottles.



What is teen dating violence?

Teen Dating Violence (TDV) is a form of intimate-partner violence. The victim is a teenager, with the abuser most likely to be a teen as well. The violence can include but is not limited to physical, sexual, emotional, psychological, or stalking.

1 in 10 high school students
have experienced physical violence from a dating partner in the last year

Teens are an emotionally vulnerable population due to their developing brains, growing societal responsibilities, and naturally curious ventures into "adult" practices. In the practice of osmosis, they model what they have learned from adults and their peers. This modeling can be a double-edged sword, as without the proper education to inform them of safe practices versus non-safe, teens can engage in mean, dangerous, and even abusive behavior.

15% of teenage romantic relationships start online

50% of teenagers report harassment and stalking

65% of teenagers report psychological abuse

Preventative education and safe spaces are vital to helping teenagers exit from intimate-partner violence and learn how to have healthy relationships with themselves and others.



Learn more at loveisrespect.org



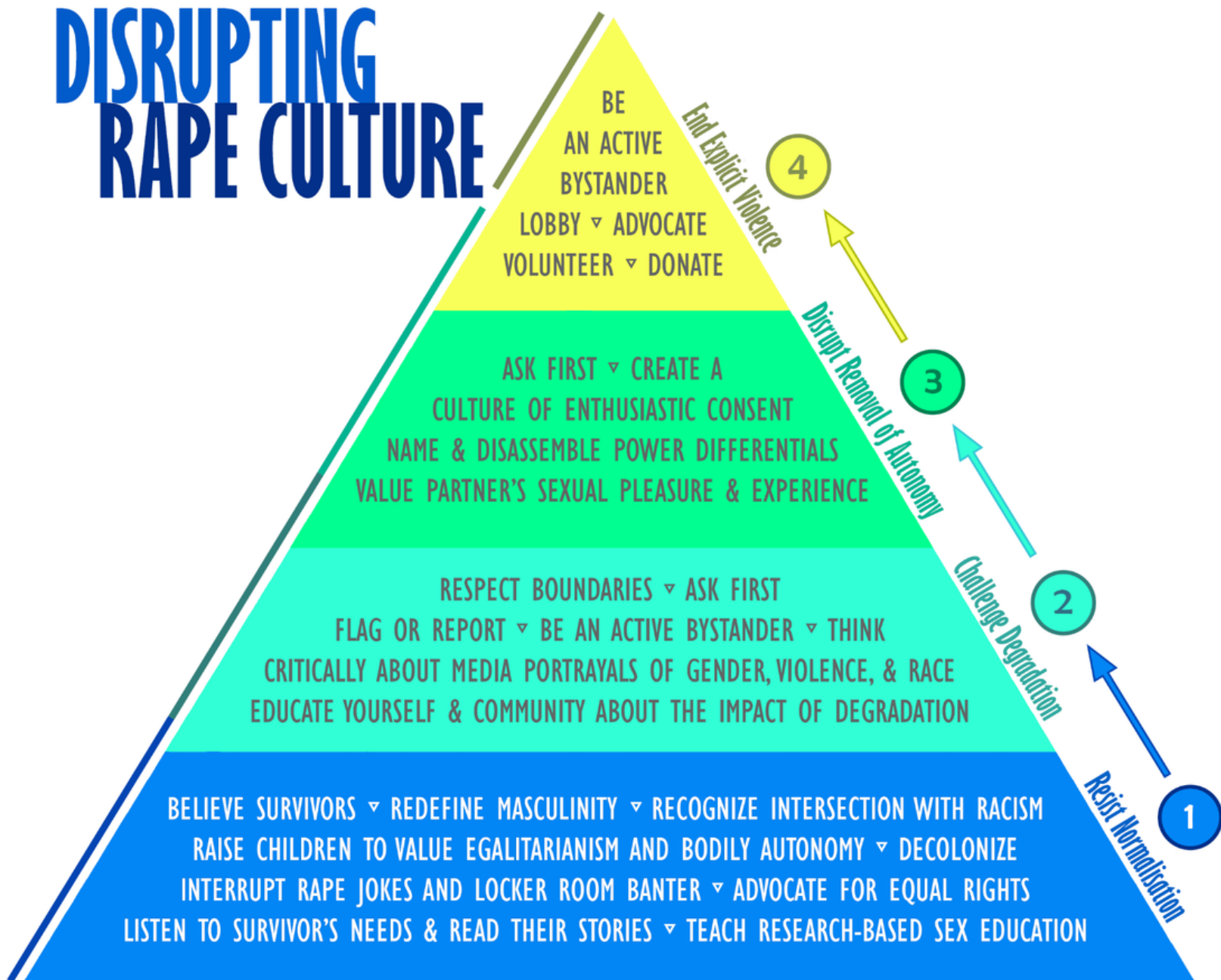
Talk to your teen today about healthy relationships and boundaries.

February 2024

Teen Dating Violence Awareness Month



DISRUPTING RAPE CULTURE



All actions matter and reinforce each other to eliminate rape culture.

When you speak up it makes it easier for others to do the same. **STAND UP. SPEAK UP.**

VOLUNTEERS

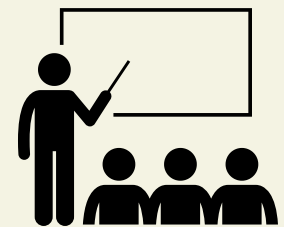
Upkeep and Maintenance



Sorting and Cleaning our Storage Shed
Checking our pantry for expired items
Organizing our office's garage

Classes

Cooking, with recipe books
Arts and Crafts events



Pop Can Returns!



We still have pop cans that need returned
All money from the pop cans directly
support survivors of domestic
violence, so please consider helping

Reach out to our Volunteer Coordinator, **Kas Roush**

kaladriusr@sylviasplace.com 269-673-5742

Sylvia's Light

thank you